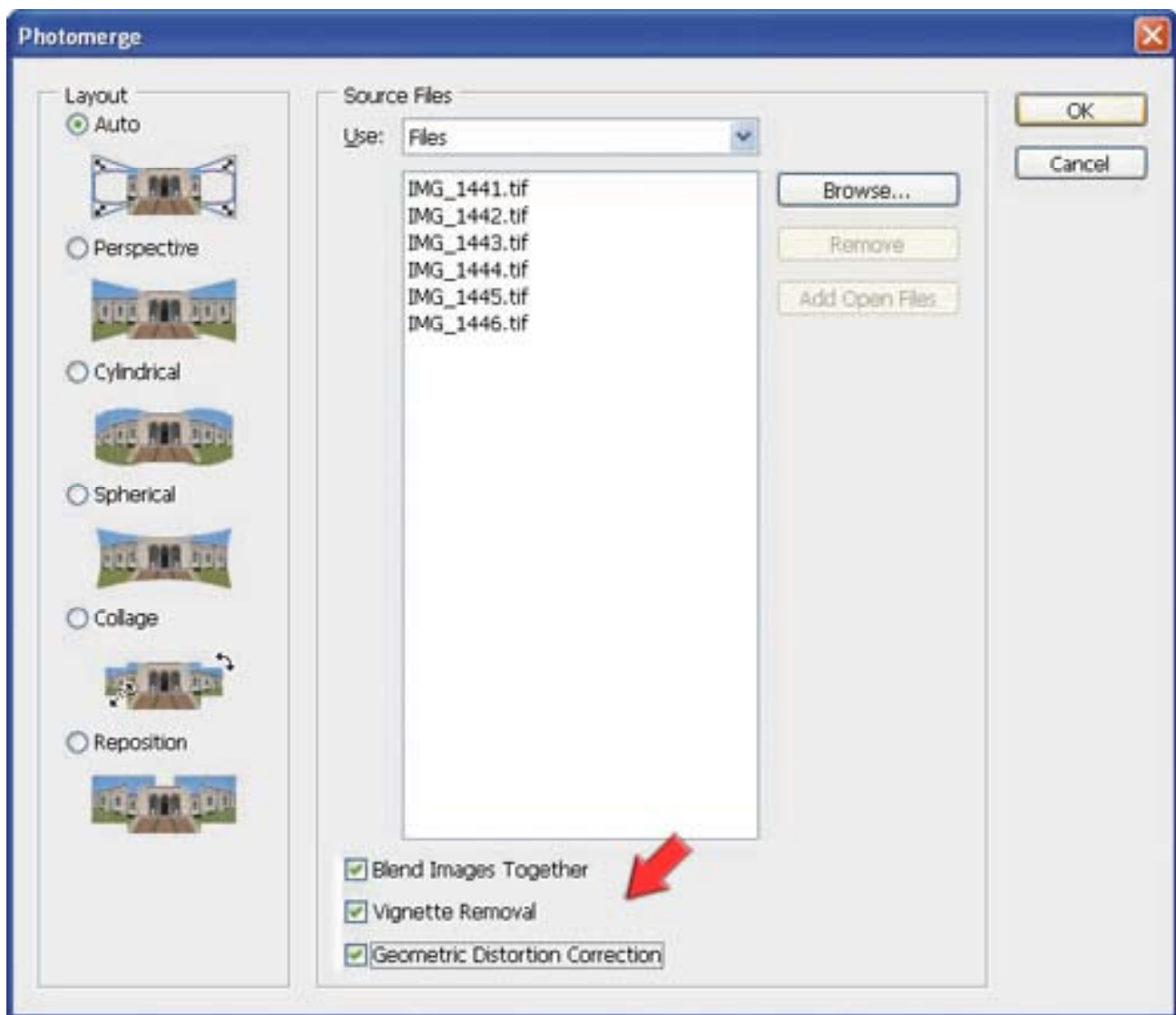


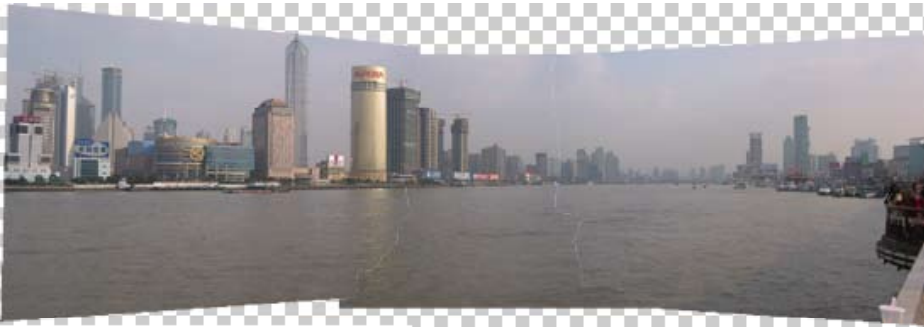
02. Instructions on preparing images for the panorama 360 views

Route 1.

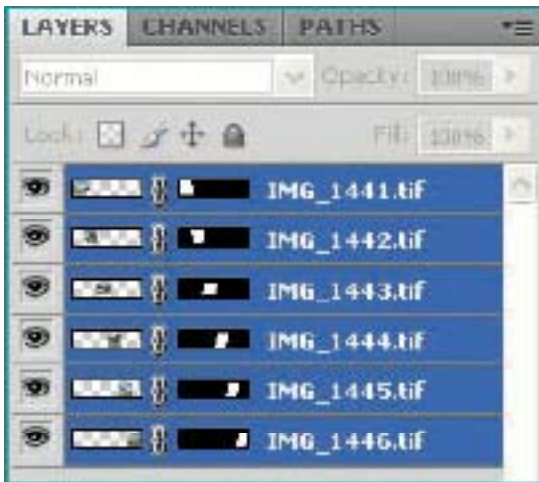
1. To prepare your panoramic image you will need to stitch together a series of photos to make one image. Once you have taken a series of photos of your wetland load the photos onto your computer and put them into their own folder.
2. With no files open in Photoshop, go to File, Automate, Photomerge.
3. In the Layout area, select auto. Then, in the Source Files area, click browse and navigate to the folder where you have your series of images ready for the panorama. Select the first image, then press Shift and select the last so that all the images are selected, and click Open.
4. At the bottom of the Photomerge dialog box, select Blend Images Together, Vignette Removal, and Geometric Distortion Correction. Then, click OK. Photoshop creates the panorama image.



It's a complex process, so you may have to wait several minutes while Photoshop works. When it is finished, you should see an image that looks similar to the one below, with six layers in the Layers panel: one for each of the images. Photoshop has found the overlapping areas of the images and matched them, correcting any angular discrepancies.



5. Select all the layers in the Layers panel, and then choose Layer, Merge Layers.



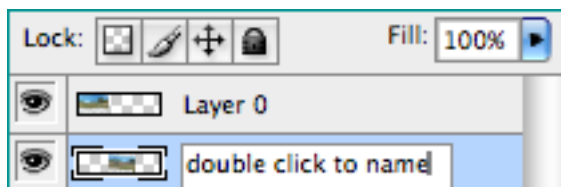
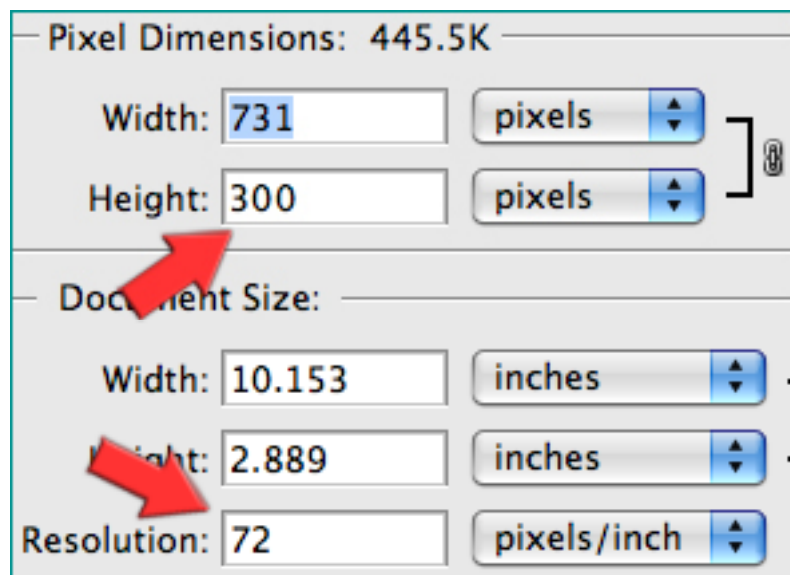
6. Select the Crop tool (c). In the options bar, click Clear to remove any values in the Width, set the Height to 300px and the Resolution to 72dpi. Then click and drag over the image so that there are no transparent areas showing from right to left. Now press Enter and your image will be cropped.



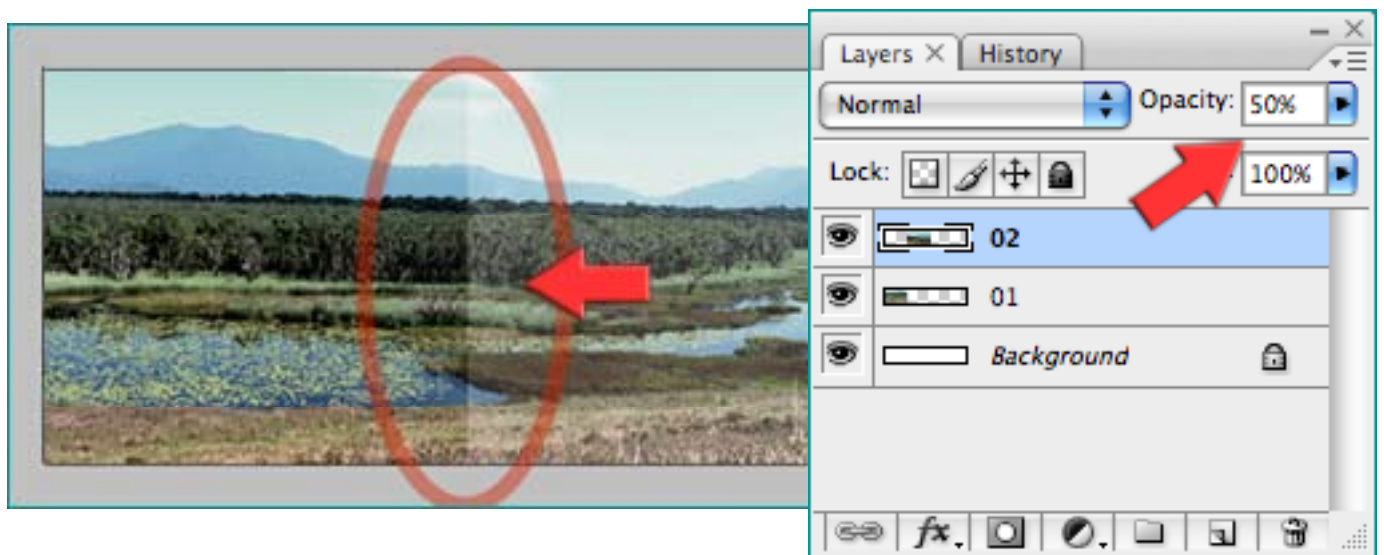
7. Now to finish go to file, save for web and devices. Here select jpeg and for the quality put it to 90%, hit save and name it accordingly. The size limit is 3MB so if your image exceeds this keep reducing the quality until it is below 3MB (Illustrated in point 11, Route 2).

Route 2.

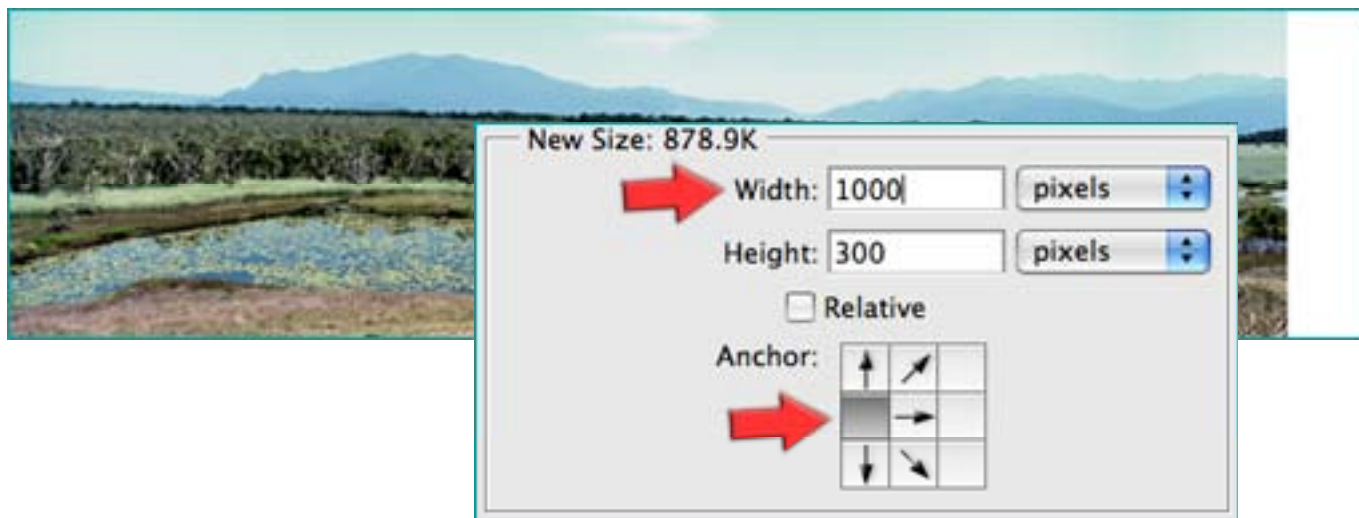
1. To prepare your panoramic image you will need to stitch together a series of photos to make one image. Once you have taken a series of photos of your wetland load the photos onto your computer and put them into their own folder.
2. Open up Photoshop and then load all of the images so that you can edit each one. The first thing you need to do is make them 72dpi. Go to Image (top menu), then Image Size, you will then see a pop up menu. Change the Resolution field to 72.
3. Whilst still in the Image Size box change the height of the image to 300px (make sure you change Pixel Dimensions, not Document Size), repeat these steps for all of the images.
4. Go to File (top menu) then New so that you can create a new document. Set the Dimensions to 300px high and approximately 3000px wide, then set the Resolution to 72dpi. This will be the base file that you build the panorama on.
5. Starting from the left hand side of the panorama drag and drop the first image onto the base file. Line it up so that the left edge is flush with the left hand side of the document. Then drag and drop the next image in the sequence next to the first image on the base file. In the Layers Palette (go to Window menu, Layers Palette), there you will find each of your layers listed, to make it easy to refer to each layer name each with a number.



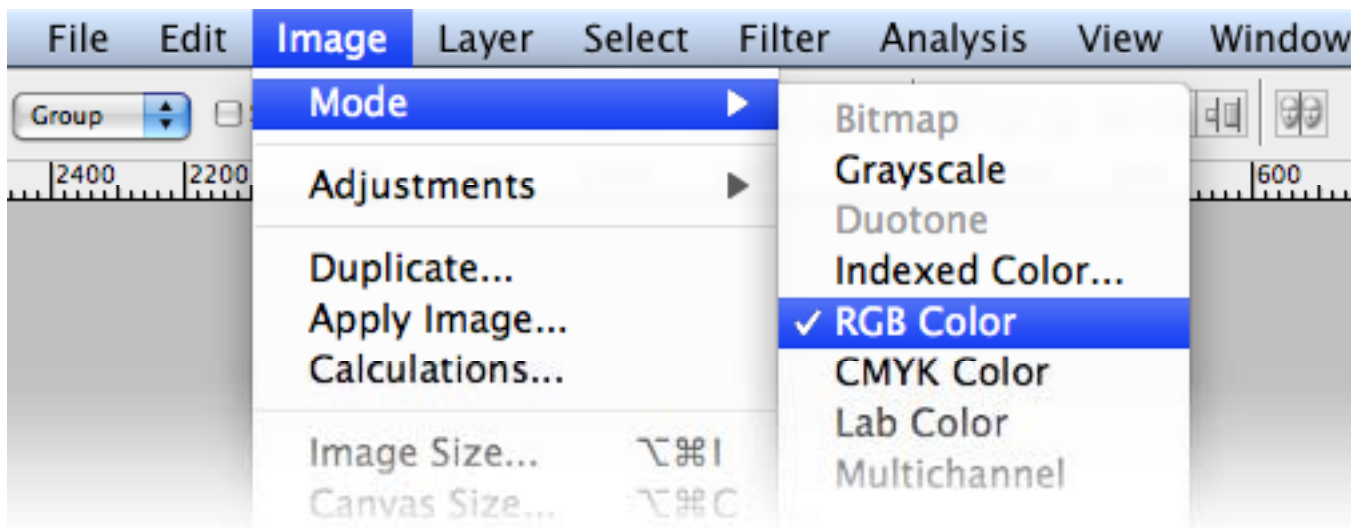
6. Select the second image in the Layers Palette and set its opacity to 50%. You can find the opacity control at the top of the Layers Palette. Now using the Move tool (v) drag the image so that it overlaps the first image (make sure that the second image is above the first image in the Layers Palette). Look for a focal point that is on both of the images that you can line up move it until it sits flush on top of it, so that it looks like the first image continues into the second.



7. Now put the opacity of the second image back up to 100% using the controls at the top of the Layers Palette. You should see that the first section of your panorama is complete, with the two images forming one.
8. Repeat this process overlaying all the images in order on the base file.
9. Once this is complete your image should look like the image below. There is some extra white space on the right hand side that we don't need, using the Crop tool (c) put your cursor to the top right corner of the panorama and click and drag to the bottom left corner. If you do not have enough space for your panorama then you can extend the canvas by going to Image, Canvas Size, first set the anchor on the middle, left hand side, and then increase the number in the Width field. Once the panorama is fully selected hit enter and the image will be cropped to the size that we need it.



10. So now you should have a file with 2+ layers on it that is 300px, Xpx wide, at 72dpi. Go to the Layers menu on the top navigation and select Flatten Layers. Now go to Image, Mode and select RGB from the list, this is the colour profile that the image has to be set to.



11. Now to finish go to File, Save For Web and Devices. Here select jpegv and for the quality put it to 100%, hit save and name it accordingly. The size limit is 3MB so if your image exceeds this keep reducing the quality until it is below 3MB.

